

## Biological Services

Our madeira beetles have been enjoying this mild summer weather and we found plenty of activity out in the field. In good conditions, Madeira vine can grow up to 1metre per week, so it was great to see the beetles feeding ferociously on the vine causing significant damage and slowing its growth.

Our worms are multiplying, and we are extending our Christmas discount by applying a 10% discount on our combo package.

Buy 1 Worm Café farm and a bucket of 1000 worms, was \$150.00 now \$135.00.



We prefer to keep a limited supply on the retail shelf, as we like to harvest the worms fresh for sale.

If you would like to place an order just call us on 5483 8866 or email [bio-services-manager@gympielandcare.org.au](mailto:bio-services-manager@gympielandcare.org.au)

Yvonne Hennell  
Biological Services Manager

**Super Specials**

**10% Discount On Worm Cafe Bundle**



**WORM CAFÉ**  
Made from 100% recycled plastic  
Recycles up to 5-6 kg of organic waste per week  
includes bedding block



**1000 COMPOSTING WORMS**  
Up to 5 different species of worms



**\$135  
SAVE  
\$15**



Gympie & District  
**Landcare**  
Group

## What's Happening in Retail

**Happy new Year to all my amazing customers old and new.**

In December last year I said goodbye to Gympie Landcare after 3 amazing years. It's been a pleasure serving you all in this time and I wanted to thank you all for making my job enjoyable.

I will miss your stories of regeneration, fighting weeds, blocking out weird neighbor's, finding cool wildlife and especially the encyclopedic brains trusts that wander through the nursery from time to time.



I hope for all of us that 2023 sees a more stable weather pattern and some amazing seed explosions happening.

Happy Planting to all of you.

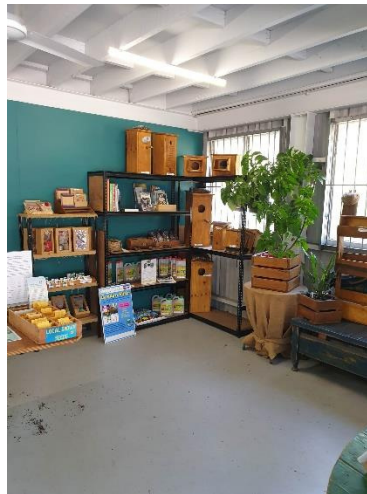
With kindness,  
Esther Attewell

## Retail Revamp

Our retail staff and volunteers have been busy refreshing the look of the retail space. It's a work in progress but we are loving the fresh feel.

Keep an eye out for more photos in the future or better yet, come in and take a look!

Ari



Time for a  
Change

**Refill  
Your  
Buckets for  
\$0.50 /L**

**Seed Raising  
Mix**

**Potting  
Mix**

**Size Doesn't  
Matter!!**

- Planting out
- Potting up
- Fertiliser added
- PH balanced

 **Gympie & District  
Landcare  
Group**



## Easy Frog Hotel

It is HOT in summer for everything, plants, wildlife, pets and especially our beloved frogs. Frogs love a moist cool place to hide away from the heat so we might see less of them in the hottest parts of the year. However, it is easier than you think to make a place for them to hang out, cool down and hide from the heat.


You can create a frog hotel in an afternoon and probably use upcycled bits 'n' bobs from the shed or garden.



Remember if you build it they will come (especially green tree frogs) so it's also very important to clean out your hotel on a regular basis, giving everything a good flush with running water and refreshing the well of water in the base is essential to stop the build-up of any potential froggy diseases.

So schedule some time in to make them a short stay hotel for our favourite hoppy little friends




Esther Attewell



# EASY FROG HOTEL


### What you need

- 1) A base ~ something plastic, glass or ceramic that holds water
  - ~ Anything that holds 10-15cm of water. It could be a bucket, tub or pot with the bottom hole sealed up or even a large glass bowl
  - ~ Do not use anything that has been holding chemicals
  - ~ Tip if it's higher than 30cm it should keep the cane toads out
- 2) Gravel, rocks or sand ~ small, medium or large
  - ~ This is to stop the mosquitos breeding in the water
  - ~ Plus it gives the frogs something to sit on
- 3) Something for the frogs to hide inside
  - ~ They like to be cozy so not anything wide open
  - ~ A lot of frogs are social so make room for more than one
  - ~ Old pvc pipes or hollow bamboo, small plant pots/tubes
  - ~ Anything really, as long as air & water can flow straight thru it
- 4) Some foliage to make it look cool & inviting
  - ~ This can be living, maybe a rush or sedge planted into the bucket or old dried palm leaf tied onto the pipe to camouflage it
- 5) Somewhere out of the sun to place the hotel




### Steps to build it

- 1) Place the base in it's final shady spot in the garden
  - ~ it gets too heavy to move once it's full!
- 2) Place a layer of gravel in the bottom of the base
  - ~ make it at least 10cm deep otherwise the water evaporates too quickly in the summer
- 3) Place the cut pipes, pots or bamboo upright and on top of the gravel
  - ~ Add more gravel or sand to hold them in place
- 4) Add your foliage ~ whatever it may be
- 5) Add clean water ~ at least 10cm or just below the level gravel, you will need to make sure the water is topped up regularly



Gympie & District Landcare Group

Gympie & District Landcare  
350 Old Maryborough Road, Araluen, 4570



## A Special Thanks!

---

We'd like to say a big thank you to Colin Purnell from Earthlife for the "Flooded Garden Giveaway" products.

These products have helped many customers to revive their properties and put life and nutrients back into their gardens.



We still have a few of these "Flooded Garden Giveaway" products left. Please enquire at the retail nursery.

You can find a heap of information of useful information and fact sheets on the Earthlife website.

**Garden Mate** - A ready to use enzyme based organic ferment.

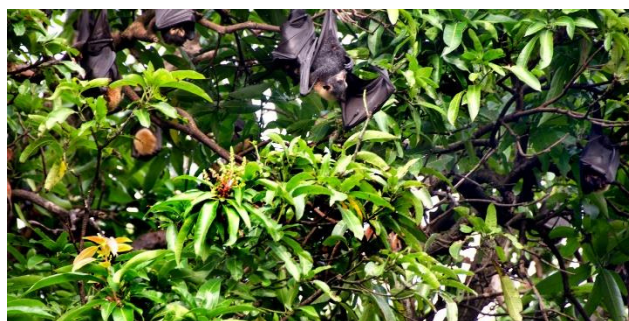
**Break Down** - A 100% natural Garden Soil and Plant conditioner containing over 60 mineral elements including rare earths and plant available silica, natural rock phosphate and over 30 beneficial microbe and fungi species.

## Misunderstood Marsupials

---

**The Flying Fox are a native Australian animal which despite being adorable, intelligent, and integral to the broader environment they encompass, do not receive the respect they deserve.**

The Flying Fox or Fruit Bat is not actually a bat or a fox but a winged marsupial. There are 3 species of Flying Fox in South-East Queensland, the **Black Flying Fox**, the **Little Red Flying Fox**, and the **Grey Headed Flying Fox**. All of these animals are protected by Queensland and New South Wales Legislation with the Grey Headed also being listed as Vulnerable to Extinction under the Environment Protection and Biodiversity Conservation Act 1999.



The Flying Foxes in the early 1900's were recorded to have camps well over one million strong situated mainly in rainforest edges and dense mangrove forests. As human activity and development has heavily depleted these habitats more and more Flying Foxes have migrated their camps closer to urban areas which can cause conflict between both parties.

In the 1920's farmers in New South Wales and Queensland had observed Flying Foxes feeding on their fruit orchards and began executing various techniques to 'control' the animals which even for the times seemed excessive. The methods tried included shooting, poison gasses, strychnine poisoning of fruits and even flame guns! In 1928 the Federal Government launched a biological study to learn about this 'pest' and their economic impact. Luckily this 2-year study fronted by Zoologist Francis Noble Ratcliffe, found the cost of controlling the Flying Foxes would not be economically viable as their impact to agriculture is relatively small as these animals feed mainly on flowering native trees and rainforest fruits.

These beautiful animals are now protected but are far from safe. From logging to clearing for agriculture and now urban development flying foxes, instead of consistently rotating through large numbers of desirable camps, are forced to live alongside another loud, erratic sometimes smelly creature, Us!

Here in Gympie many of the Flying Foxes old remnant camps have been long cleared and they are now forced to take residence in suburban areas. Urban activities can put stress on the animals and Flying Fox activity can put stress on residents but remember these animals are an integral part of the Australian Bush. Studies have revealed these animals can travel up to 400km in a night! While embarking on these journeys for food they mainly feed on flowering Eucalypts which produce most of their nectar at night which is likely an ancient symbiotic connection with the nocturnal Flying Foxes as they are integral for linking the genetics of the Eucalypt stands through pollination. They also feed on large fruiting rainforest trees spreading seed and effectively pollinating and propagating bushland. Instead of seeing these animals as a nuisance I see them as fellow bush regenerators.



Gympie and District Landcare in association with Gympie Regional Council are attempting to rectify an old Flying Fox camp at Widgee Crossing by removing the dreaded Cats Claw, this will be in association with the removal of other weeds especially Chinese Elm, *Celtis sinensis* to assist the natural regeneration of the site. Although it may take some time to rectify this site and regain the structure required to host a large flying fox camp there are many other plants and animals that will benefit from this work.

Like all bush regeneration, a large overarching goal such as rectifying a flying fox camp will have countless mutual benefits to all of the other creatures which encompass the ecosystem, as well as the human interests in the catchment. Carefully and systematically removing weeds in the correct sequence can encourage ecological succession and provide advantageous conditions to the native species which belong. In the past when we have clear felled forests and denuded entire creek lines, aggressive, fast growing, and opportunistic plants (weeds) recolonised. Most of these plants were brought from other Continents and do not have natural predators and gain advantage over native plants, heavily stunting biological diversity. This change in balance can cause issues such as erosion, changing entire ecosystems and producing larger problems in the broader catchment.



It is our job as bush regenerators to tip the balance back in favour of native plant species which in turn will provide food and shelter for animals which will then contribute to the pollination, propagation, and overall health of the system. The resurgence of plant and animal life into once degraded ecosystems is what makes bush regeneration the most rewarding undertaking a wildlife lover can accomplish. It is truly rewarding to watch an area of bushland bounce back from human degradation and mistreatment and return to their natural state of biodiversity and equilibrium over time. If you are interested in embarking on a career that embodies this philosophy and allows you to make an objective difference to the natural world, please give Gympie & District Landcare a call and ask to about a job in regeneration with our Environment and Conservation team.

If you require any information about living with flying foxes, go to [www.derm.qld.gov.au](http://www.derm.qld.gov.au) for practical ideas on reducing the impact. Taking action to try to get flying foxes to move on is illegal in Queensland unless under a permit issued by the Department of Environment and Resource Management. Disturbing flying-foxes at a camp can lead to their dispersal into neighbouring properties and elsewhere and can cause significant stress on individual animals.

Please give the Flying Foxes, our winged regenerators the peace and respect they deserve to allow them to continue as they have done for thousands of years in diversifying sclerophyll bushland and dispersing rainforest seedbanks.

Marty McArthur  
Environment & Conservation Project Officer



# Volunteerism

---

## VOLUNTEERISM – THE HIGHS, THE LOWS, THE CHALLENGES & THE OPPORTUNITIES

Gympie and District Landcare Group started as a volunteer group 35 years ago in 1988, by some of our local graziers, aiming to promote responsible land management in our region. Over that time span and thanks to those and many more amazing and committed volunteers we've grown a lot. We are now a business, employing approximately 15 people, with a range of services and products ranging from our well-known tubestock plants to our own potting mix range, worms, vermi-liquid and habitat boxes. We sell biological control insects for the highly invasive Cat's Claw and Madeira Vine. And our hard-working bush regeneration team are out there doing weed management, replanting and giving advice to people aiming to restore their own properties.



While we've grown a lot, we are fortunate to have the continuing support from a very dedicated group of volunteers, including a fully volunteer-based management committee. Last year, our volunteers collectively contributed an amazing 8,716 hours to the organisation, our environment and our community. We simply could not exist without them and certainly would not have survived the enduring impacts of COVID and floods without their continuing support and dedication.

Gympie Landcare is not alone in our reliance on the contribution of volunteers. Across Australia, the importance of volunteering would be hard to overestimate. In 2019, it's estimated volunteers contributed nearly 600 million hours to the community. To put this at the government recommended economic contribution rate of \$36/hour, volunteerism contributed a whopping 21.6 billion dollars to our nation.

But volunteerism has been in decline for many years, with the Australian Bureau of statistics showing that between 2014 and 2019, there was a 20% decrease in volunteering hours. And then COVID came along. Research conducted by the Australian National University (ANU) revealed that *two out of three* volunteers stopped volunteering in 2020 during the early stages of COVID-19. This was the equivalent of 12.2 million volunteer hours *per week*. While there has been a slight rise in volunteers since then we know that as of early 2022, Australia continues to have *1.86 million* fewer volunteers compared to pre-COVID.

This dramatic decline in volunteering has significant consequences for organisations such as ours. Post-COVID, a third of organisations who rely on volunteers, including ours, continue to have fewer volunteers than pre-COVID, placing both financial stress on the organisations and emotional stress on staff and remaining volunteers as they try to continue supporting communities in their own way. Additionally and ironically, while there are fewer volunteers, the demand for them is increasing as climate change impacts in the form of natural disasters, and social stressors such as houselessness and the rising cost of living, place ever-increasing pressure on our communities and our environment.

Many of the problems that impede the volunteering sector today are long-standing issues that volunteer-based organisations continue to find challenging to address: inadequate resourcing of

volunteer management, poor recognition of volunteers, and an overall lack of strategic development and investment. However, these problems are now further compounded with higher living costs forcing people to work longer hours, and unemployment rates at the lowest rate in decades, decreasing both the capacity of volunteers to contribute, and the pool of volunteers that organisations and communities can tap into.

Opportunities for organisations such as ours also exist. For example, being creative in ways that bring in new cohorts of volunteers and redesigning volunteering programs to be more diverse, inclusive, efficient, and responsive to volunteer interests and availability. Volunteers and organisations have already shown great resilience and adaptability during recent crises. During COVID-19, many informal community volunteers emerged to support those in need, showing that the great spirit of community contribution is still well and truly alive in Australia.

Volunteering is essential to the nation's recovery and its ongoing wellbeing. Volunteers are part of the nation's workforce and every local community, playing vital roles in many sectors including environmental protection. Research consistently demonstrates that volunteering can contribute to good mental health and wellbeing. Volunteering also builds social cohesion and community resilience which will be much needed in the coming years.

Volunteer organisations and national bodies such as Volunteering Australia, supported by local, regional and national government have an opportunity to do things differently. And this is Gympie Landcare's challenge and opportunity. How do we change the way we support and manage our volunteers? How do we become a more inclusive and flexible volunteering organisation? We feel we have so much to offer those looking to contribute to the environment and to the community. Our organisation offers an extremely wide range of activities people could take part in. Of course, there are the plants and planting, but there is so much more. We could use help in general maintenance, building habitat boxes, marketing our products, attending community events, community education and more.

Gympie Landcare is currently going through the process of reassessing our volunteer program and how we can offer people wanting to volunteer in this space a safe, inclusive and positive experience. Stand by as we work through this and become better and stronger for our volunteers, our community and our stunningly beautiful environment.

Gympie Landcare is currently going through the process of reassessing our volunteer program and how we can offer people wanting to volunteer in this space a safe, inclusive and positive experience. Stand by as we work through this and become better and stronger for our volunteers, our community and our stunningly beautiful environment. This blog explores volunteerism for both Australia and Gympie Landcare in more detail: the highs, the lows, the challenges and the opportunities.

The challenges that the decline in volunteerism has for organisations such as Gympie Landcare are large. They include financial stress on the organisation and emotional stress and fatigue on remaining





staff and volunteers as they strive to continue to deliver the same service to community and environment.

Yet there are also opportunities out there. As ongoing natural disasters have shown, people continue to want to help, to support those in need whether they are humans, animals, or natural environments. So how do we as an environment- and community-based organisation change the way we do things in order to provide a positive volunteering experience for all? That's the question we are currently trying to find answers to.

Alex Van Beek  
Vice-President



## Catch Us at The Sunday Markets

---

Stop by to show your support and have a look at all of Terry's wonderful creations.

1st & 3rd Sunday Every Month - [Gympie Duck Pond Markets](#)

2nd & 4th Sunday Every Month - [Gympie Showgrounds Farmers Markets](#)

*We'd love to see you there!*

---

### HABITAT BOXES SUPPLIED BY GYMPIE & DISTRICT LANDCARE



We keep our costs down by providing habitat boxes that are built in-house by dedicated volunteers. We want everyone to be able to afford to hang a box in their property.



Gympie & District  
**Landcare**  
Group

**THANK YOU FOR SUPPORTING US  
& THE WILDLIFE**

## Clean Australia Day



**Saturday 5 March 2023**

Gympie Landcare, in partnership with Burnett Mary Regional Group (BMRG) and Clean Up Australia have planned a marine & litter debris clean up for the Gympie Region, on 5th March 2023 at Rainbow Beach (Lawrie Hanson Park).

With the devastating floods from 2022, we are still finding residual litter in our waterways and on our beaches. We are asking for your assistance for one day, at Rainbow Beach and up to Inskip Point to remove rubbish from the coastline.

We have been working with Tangaroa Blue and BMRG over the past six months and have already undertaken extremely successful major clean ups of our coastlines and waterways, but there are still small plastics and rubbish that are of a real threat to our marine & river life.

If you have a few hours to spare, and you would like to contribute to protecting our marine life and threatened species, please consider joining us 5th March between 9am and 3pm.

Can't help on the beach? We are looking for assistance at the registration area, assisting with registrations, counting and allocating rubbish to allow upload to the website.

Our staff are looking for other areas within the region to clean up and stop rubbish making its way to our riverways.

Do you know somewhere that we can make an impact?

Contact Gympie Landcare now to help as part of our marine and litter debris project. We are looking for opportunities to remove litter from all our local waterway areas!

- Rainbow Beach
- When: Sunday 5 March
- Meet Location: Lawrie Hanson Park (Opposite Rainbow Beach Surf Club)
- Registration: 9am
- [mappress mapid="1002"]

Other areas we will be targeting include specific locations on:

- Inskip Point
- Tin Can Bay Waterways

Wonderful organisations such as Burnett Mary Regional Group, Clean Up Australia, Cooloola Coast Care, Rainbow Beach Surf Lifesaving & Gympie Regional Council are also supporting this fantastic project.

We will be hosting a community BBQ @2pm to thank all of our amazing volunteers for the help. So come along, get involved and help make a real difference to our waterways and shoreline!

**Register Your Interest Today!!**





Gympie & District  
**Landcare**  
Group

# Marine & Litter Debris Clean Up

Sunday 5 March 2023  
Rainbow Beach  
9am - 3pm



**We Need  
Your Help**





# Tiaro & District Landcare Group

## Easter Fundraiser 2023

Easter is the major fundraiser for Tiaro Landcare's Mary River turtle project.

You can help us save this precious endangered species by purchasing our unique Easter treats.

Don't have a sweet tooth? [Please Donate to Mary River Turtle Public Fund \(giveeasy.org\)](https://giveeasy.org)

Email completed [order form](#) to Carol Neilsen: [tiarolandcare@gmail.com](mailto:tiarolandcare@gmail.com) mobile 0408062935

When

ordering please make arrangements for delivery.

Easter is fast approaching, so please order soon.

Thanks for your support,

Regards

Carol

[Tiaro Landcare Choc Turtle Convenor](#)

[www.tiarolandcare.org.au/maryriverturtle/](http://www.tiarolandcare.org.au/maryriverturtle/)

## Help save the endangered MARY RIVER TURTLE

Results from sales of chocolate turtles:

- more turtle hatchlings in the river
- discovered their preferred habitat
- ongoing research into aquatic predators



### Turtle Surprise \$9

*Vintage sugar Easter egg with a chocolate turtle inside  
PLUS 6 milk & white solid chocolate foil wrapped eggs*



### Chocolate Turtle Lovers \$9

*4 solid chocolate turtles  
8 solid chocolate foil wrapped eggs  
Available in milk, white, dark or mixed (milk & white)*



### Old Favourites \$5

*2 solid chocolate turtles  
5 solid half chocolate eggs  
Available in milk, white, dark or mixed (milk & white)*



### Mary's Turtle Family \$5

*2 chocolate turtles (dark & milk)  
4 baby chocolate turtles (dark & milk)  
2 half chocolate turtle eggs (white)*

HOME-MADE traditional Easter treats with Cadbury's chocolate

## MRCCC ~ Find a Frog in February



**FIND A FROG**  
IN FEBRUARY

Logos for Fraser Coast Regional Council, Noosa Council, Sunshine Coast Council, and Mary River Catchment Coordinating Committee.

**UPCOMING 2023 FROG WORKSHOPS AND SURVEYS**

DATE	LOCATION
WED 1 FEB	TEWANTIN
FRI 3 FEB	MALENY
WED 15 FEB	COOLOOLA COVE
FRI 17 FEB	MARYBOROUGH
TUES 21 FEB	CONONDALE
WED 22 FEB	AMAMoor

FOR MORE INFORMATION, HEAD TO  
[MRCCC.ORG.AU/FROG-IN-FEBRUARY/WORKSHOPS-EVENTS/](http://MRCCC.ORG.AU/FROG-IN-FEBRUARY/WORKSHOPS-EVENTS/)  
OR PHONE 07 5482 4766 OR EMAIL [ADMIN@MRCCC.ORG.AU](mailto:ADMIN@MRCCC.ORG.AU)

Photo Credit: Kevin Bowring

## The Holistic Reach of Gympie Community Gardens

You might think of community gardens as pockets of land in a community where people just grow and harvest food.

But you may like to think again!

### What goes round comes around.

Community gardens give back to the community in so many ways...

Last year volunteers showed up at The Palms to do a fun gardening blitz for a lovely couple who had given them a ride-on for free and urgently needed help with cleaning up. A delicious morning tea surprised the volunteers.

Community gardens also improve community connections, knowledge, and relationships.

Planting sweet potatoes and learning about the nutritional benefits of the leaves





Community gardens are generally run by a small group of dedicated volunteers, who give of their time, energy and knowledge for the benefit of the residents of their community. And they have to raise money from time to time... Often they wish they had more helpers... But they cook, serve and laugh about the onion before the sausage



Gympie Community Garden has so many plans for the future, designed by experts. They will word towards a space filled with different areas for everyone to enjoy – from a kid's zone to a zen garden, from a flood mitigation zone to a learning centre and more. Plans provide communities like Gympie with resilience and preparedness.



Gympie Community Garden welcomes everyone to their outdoor space. They love your company, hearing your stories and sharing theirs over a cup of tea after a working bee. 2023 is set to be a big one for the gardens, so why not join them?

You too can play a part in the garden and improve your and the community's physical, mental, spiritual and communal wellbeing!

If you would like to know more, or join the mailing list, contact: [gympiecgarden@gmail.com](mailto:gympiecgarden@gmail.com)

Or simply join by visiting: Become a member

## Valley Bees Group

---

Interested in learning about caring for bees, bee food, and hives?

[Valley Bees Group](#) meets at Gympie Landcare on the 1st Saturday of every month at 9am.

[350 Old Maryborough Road, Gympie](#). Just park your car at the office on Groves Road and enter through the side gate.

Please wear light coloured clothing, closed shoes, a hat & a veil if you have one. Please bring a plate to share at morning tea.



## Friends Of Messmate Park

---

Friends of Messmate Park are a dedicated group of people who regularly volunteer their time, maintaining and cleaning up Messmate Park.

This Park is a stunning example of remnant vegetation. It includes one very impressive big tree (Eucalyptus cloeziana, Gympie Messmate) next to the walking track.

If you would like to volunteer or join in for future weeding or other activities the group meet at [Messmate Park](#) on 3rd Saturday of each month at 8am

