

June 2020



Friendly Reminder - Raffle Fundraiser

Get your raffle tickets now for the chance to win a \$100 Nursery Voucher!!

Gympie & District Landcare Group Inc. will be giving away a \$100 Nursery Voucher to the lucky winner of this raffle.

This raffle is designed to assist us in raising funds so that we can purchase and install an Honour Board at our premises, to honour the dedicated Life Members of Landcare as well as the organisation's Presidents.

Tickets only cost \$2 each, OR 3 tickets for \$5!

Tickets can be purchased online, over the phone or in person at our office or nursery facility.

Raffle tickets will be available for sale up until Tuesday 30th June 2020.

Winner will be drawn at 10:00am on Wednesday 1st July 2020 at our Gympie Landcare Nursery. Our lucky winner will be notified by telephone. Good luck!



Landcare Festival unable to proceed for 2020 – but we'll see you in 2021!



It is with great disappointment that I must announce that the Management at Gympie & District Landcare Group Inc. have now made the difficult decision that we will not be able to go ahead with the Landcare Festival this year.

With the ever-changing uncertainty around the future of the Covid-19 situation and what type of social distancing guidelines will still be mandatory in September, we have had to make this decision based upon practicality. We have also based this decision upon the consideration of the general health and safety of the members of our local and surrounding communities.

Some fantastic news however – the date of the next Landcare Festival has been set for Saturday 18th September 2021!

We will be holding the 2021 Landcare Festival at Nelson Reserve and this means we will have a much larger and flatter area for our stalls, along with public amenities, more parking and improved disability access (and more sausages 😊) and with a lot more time to plan, we hope that we can make it bigger and better than ever before!

The whole team looks forward to seeing each and every one of you there next year for a fantastic day, after what has been such a challenging and uncertain year in 2020.

Regards,

Rhiaan Ashton

Education & Events Coordinator

Congratulations to our Sustainability Photo Competition Winners

Recently we ran our 'Environmental Sustainability' Photo Competition and we received some fantastic entries.

The creativity that people have shown whilst being stuck at home was amazing and we must congratulate each and every one of you that entered for the great work that you have been doing and the interesting ideas that you have had.

Our administration team were tasked with the difficult job of picking our winner and after much deliberation, we are pleased to announce that our winners were:

1st Place – Carley O'Donnell

"I have decided to start building my own transportable pallet veggie gardens. My first garden is a herb garden, all the herbs started off as cuttings from my dad's garden which I started to grow in jars of water along with spring onion and celery. Once the roots started growing, I built the pallet garden (which I sourced from a friend for free) then I planted them. My next project will be a deeper one, same concept for veggies. The reason I have them on wheels is so that where ever I go my gardens can come with me and I will never have to buy herbs again!



2nd Place – Jennifer James

"Being stuck at home we decided to clean out our shed. We found a big old canvas poster that was ready for the dump! Instead, we decided to give it some new life by giving it a coat of paint and then tracing a pattern onto it. We used leftover beads from Christmas kits (that would have also gone in the bin) and some feathers that our chooks had dropped, to create this beautiful new artwork. We used up all the leftover beads and nothing had to go in the bin. It also looks lovely on my wall. Less material and plastic going into landfill."

3rd Place – Annemiek Wilson

"Not long after losing my job in the entertainment industry I found myself looking at ways to cope. What will this virus do to our way of living? I realised more than ever that now I would need to start re-evaluating my priorities. I decided to create a vegetable garden with used polystyrene boxes. Some old timber and a load of garden soil. I sourced my seed from friends and bought some seedlings when available. I used some old netting to keep the cabbage moths away from my broccoli which are doing fabulously. My family will be benefiting in the next few months 😊 as we go through this trying time."





Messmate Park Bushcare Group News

We managed to rake the paths and clear vines around newly planted trees – but the main event was to catch up with news from everyone after being isolated for 2 months or more.

A fruiting scrambling Lily (*Geitonoplesium cymosum*) was seen twining around the vegetation for support. A beautiful plant which is suitable for small gardens.

Golden Orb spider webs were seen across many parts of the park. The female spiders were very conspicuous, suspended on their yellow-tinged webs. Great care was taken not to disturb the webs. The size and strength of the webs is remarkable and as the webs tend to remain in one place for long periods, it was not unusual to see other varieties of small spiders taking advantage of these webs.

Tuesday's Art Group who have worked towards an April/May showing of their work featuring Messmate Park, unfortunately have now postponed until the end of the year.

Peter and Bevly Hughes have written about the park (see Gympie Times, Wednesday 20th May 2020) and hopefully this publicity will help people get to know their local areas.



We would love to see some new faces come along and admire our great park!

Join us on Saturday 20th June at 8:30am for an enjoyable morning – just follow Tin Can Bay Road, before turning onto Priddy Rd – the park is on Tinana Creek. Please bring a chair, hat, water bottle and sunscreen.

For more information, please contact Sandra Lalor on 0412 137 187.

Free Beekeeping Sessions Resuming – Bookings Now Essential

The Valley Bees group hold free beekeeping sessions at Gympie Landcare on the first Saturday of every month. Come along, enjoy the fun and learn how to work with bees on your own property.

Honey Bee workshops will re-commence on the first Saturday of the month from July 2020, with sessions beginning at 9am.

Due to Covid-19 restrictions, participants are limited to 20 and therefore bookings are essential.

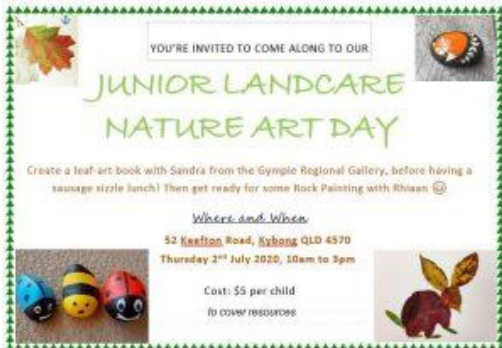
Unfortunately morning tea will no longer be supplied, so please bring your own along. Please also bring a suit if you have one – the club can provide veils.



To make a booking please contact the Valley Bees group directly on 0479 131 208.

Junior Landcare News – Sessions set to resume in July!

Some fantastic news to begin with – Junior Landcare sessions will be resuming in Week 1 of Term 3 – Thursday 16th July 2020. Our first session will see the wonderful Elli Webb (*Waste Education Coordinator | Cleanaway & Gympie Regional Council*) come and teach us all about recycling and waste! We then have a special project planned that will require the children to use this knowledge of waste and recycling.



I have also recently organised a Nature Art Day for our Junior Landcarers to catch up, which will be held on Thursday 2nd July 2020 at a lovely property at Kybong called Keefton Place.

We plan on having a lot of fun, with Sandra Ross from the Gympie Regional Gallery coming along to teach the children how to make an artist book using leaf art, before having a sausage sizzle lunch. YUM!

The afternoon will see us doing some nature-themed rock painting. We will then hide these rocks around town, along places such as the River to Rail Trail, for people in the community to find and share with us. Jayne has also kindly given permission for us to paint some of the rocks that make up the property's labyrinth maze as our own special way of saying thank you for having us!

I will soon be creating our Special Home Garden Newsletter, so parents please make sure that you get any progress updates to me so that I can include these in the newsletter.

In the meantime I hope that your children have been enjoying the Online Learning Page that we created. I am currently working on trying to update some of the content and trying to find some new material that I can upload.

I also hope you all enjoyed the Activity Booklets that we posted out to the children – I received a couple of photos of some very happy kids!

I look forward to seeing all of your wonderful children very soon – they have also showed some amazing resilience and initiative through these times, by continuing to be Junior Landcare Superheroes in their own backyards! It really is lovely to see and they should all be extremely proud of their efforts.

This month's Nursery Specials



Tuckeroo (*Cupaniopsis anarcardioides*)

A tough, long-lived, shade and feature tree adaptable to many soil types, the Tuckeroo lives from 50-80 years!

Produces lovely yellow flowers in the spring, followed by decorative orange berries (non-edible).

- Grows 5 to 8 metres high
- 5 to 7 metres in width
- Frost tolerant – once established
- Drought tolerant – once established
- Low maintenance

Buy 1, Get 1 Free!

Reforestation Methods Workshop – 18th July 2020, 9:00am – 1:00pm



Join us on a trip to Benworth Farm at Anderleigh, to discover where PFSQ have established farm forestry plantings with local species for both timber production and for environmental outcomes.

This project combines commercial and non-commercial species in strategic plantings associated with riparian areas and on land that was not suited to Macadamia nut production.

This workshop will cover the following three important aspects of reforestation, at an entry level:

- Planning a reforestation project – including:
 - appropriate species selection with a focus on local regional ecosystems
 - optimising the success and the environmental outcomes of reforestation by taking broader landscape features and attributes into consideration (i.e. drainage characteristics, linkages with remnant vegetation, fire management, soil changes)
 - understanding and mitigating risks to successful reforestation (drought, flood, soil compaction, browsing, lack of maintenance)
- Design and layout of reforestation projects –
 - practical design solutions for easy and safe maintenance
 - planting density
 - species layout
 - access for maintenance and fire management
- Site preparation and establishment methods –
 - Operational timelines
 - Weed control
 - Cultivation techniques
 - Planting methods
 - Maintenance



About Your presenters: Private Forestry Service Queensland Inc.

Private Forestry Service Queensland Inc. (PFSQ) is a not-for-profit, community group implementing professional forest establishment and management work across Queensland, from our home base in Gympie.

Amongst a broad range of forestry work, PFSQ have successfully established and maintained revegetation and koala offset projects for the Sunshine Coast Regional Council, Healthy Land and Water, Cherish the Environment Foundation, Subdivisions (QLD) Pty Ltd., Ergon Energy and SEQ Water.

The group consists of 6 qualified professional foresters, an administration team and a skilled field crew.

PFSQ's forest management system is certified to the Australian Standard for Sustainable Forest Management (AS 4708-2013), an internationally endorsed standard (PEFC) managed under the Responsible Wood Certification Scheme. AS 4708-2013 defines nine criteria and forty



requirements relating to the quality assurance, environmental, economic, social and cultural values that must be considered throughout all forms of forest establishment and management.

Please be advised that unfortunately there are no toilet facilities available for use at this property.

Session Time: Saturday 18th July 2020, 9.00am – 1.00pm. Bus leaves Gympie Landcare at 8:00

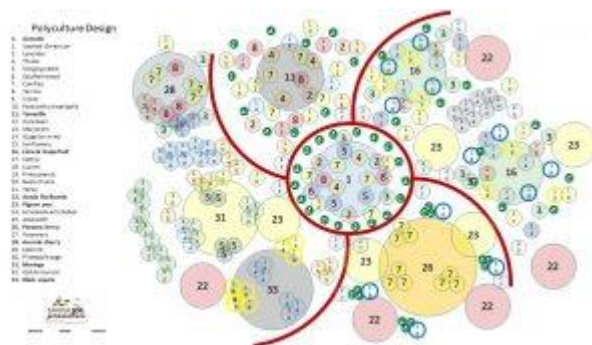
Morning tea will be provided.

Location: Benworth Farm, Anderleigh – return bus travel to and from the Gympie Landcare Office is included in your booking.

Prices: \$50 – Members / \$80 – Non Members

Introduction to Forest Gardening Workshop (2 Day Course) – 1st & 2nd August 2020, 9:00am – 4:00pm

Come along and join us for this weekend workshop where you will immerse yourself in the world of creating and maintaining a Forest Garden. You will gain knowledge on the establishment, as well as the ongoing maintenance of a successful orchard ecosystem. We will demystify the necessary art everybody should know about the workings of their Forest Garden, as well as design, soil biology, and health management.



This is a 2-day introduction to the concept and techniques of forest gardening, involving theory and practice from visioning to harvesting.

The 2-day course will cover:

- Benefits of forest gardening;
- Ecological principles;
- Site selection and design;
- Integration of permaculture principles and design process;
- Architecture;
- Succession;
- The Underground Economy;
- Species selection; and
- Site preparation, establishment and maintenance; harvesting.

Edible forest gardening is the art and science of putting plants together in woodland-like patterns that forge mutually beneficial relationships, creating a garden ecosystem that is more than the sum of its parts. You can grow fruits, nuts, vegetables, herbs, mushrooms, other useful plants, and animals in a way that mimics natural ecosystems. You can create a beautiful, diverse, high-yield garden. If designed with care and deep understanding of ecosystem function, you can also design a garden that is largely self-maintaining.

About Your Presenter: Michael Wardle

My name is Michael and I began my permaculture journey about 25 years ago when I picked up a copy of Permaculture One and the Introduction to Permaculture by Bill Mollison.

I have applied the design principles and ethics of permaculture to my personal life and am now enjoying the wonderful opportunities of being able to apply them to my workplace and my community.



I enjoy learning about the many different facets of permaculture and design. Through my learning, I have also come to love teaching.

I finally jumped in after reading and applying what I had learned and have since done 4 PDC's followed by my Permaculture Teacher Trainer with Rosemary Morrow and Nick Ritar. I completed the Advanced Permaculture Design Principle workshop with David Holmgren, Advanced Permaculture Design with Dan Palmer and the Forest Garden Design Intensive with Dave Jacke as well as the REX10 online with Darren Doherty plus many more. I aspire to be as inspirational and effective as my teachers.

I continue to do other courses to advance my knowledge and to increase the value which I may provide in both my teaching, projects and consultations.

Session Times: Saturday 1st August 2020, 9:00am – 4:00pm; AND Sunday 2nd August 2020, 9:00am – 4:00pm

Morning tea and lunch will be provided.

Prices: \$80 – Members / \$100 – Non Members

Permaculture Veggie Gardens & Compost Systems Workshop – 19th September 2020, 9:00am – 4:00pm

Permaculture is a set of design principles centered on whole systems thinking, simulating, or directly utilizing the patterns and resilient features observed in natural ecosystems. It uses these principles in a growing number of fields from regenerative agriculture to your backyard organic vegetable garden.

In this course you will learn the basic principles and practices that guide Permaculture Design. There are many factors that affect the productivity of our vegetable gardens including the sun, wind and rain. Localised climates and temperatures can also have a significant impact on the success of a vegetable garden.

Learn how to effectively read the landscape and incorporate the forces of nature to work with your garden, rather than against it.

How do we efficiently design a vegetable garden? Why do we build soil? What is the easiest way to create a garden with little effort? How and where should I position my garden beds? These are all the type of questions that will be answered during this workshop.

We will also look at how to set up your own backyard composting system as well as where this should be positioned. We will look at what you can and can't put in your compost, and how to maintain your compost so that it is as healthy as it can be.

About Your presenter: Aaron Mears

Aaron Mears is a director of [The Living Classroom Project](#) and manager of Lulu's Perch Permaculture Farm.

He has grown food with Geoff Lawton in the Jordanian desert, with Shipibo natives in the Amazon and Peruvian locals in the Andes Mountains and has gained much experience.

Aaron aims to spread his knowledge far and wide through his classes, online videos and consultancies.



Aaron has also played a large part in successfully guiding our Junior Landcare children in creating their very own amazing vegetable garden here at our Landcare office.

Session Time: Saturday 19th September 2020, 9:00am – 4:00pm; AND

Morning tea and lunch will be provided.

Location: Gympie & District Landcare Conference Room – 5 Groves Rd, Araluen QLD 4570

Prices: \$80 – Members / \$100 – Non Members

“Birds In Our Lives” Ornithology Workshop – 17th October 2020, 9:00am – 4:00pm

Birds have influenced man’s culture, religious beliefs, & daily life since the earliest of times. “Birds in our Lives” will take a look at a birds’ role in our Environment.

Through this special presentation, we aim to provide an insight into this and other Avian aspects such as the effects European settlement has had on our Birds. While some species have adapted quite well to such settlement, others have not fared so well.



We will also look at an outline of the various local bird groups, their identification, and how to “Bird watch”, a pastime that has proven to be very relaxing.

Last of all, and more importantly for us and our future generations, attracting birds to properties, for often overlooked is the pleasure & soothing aspect of actually having birds as companions in our daily lives.

About Your Presenter: Cooloola Nature – Kelvin & Amelia Nielsen

Cooloola Nature is a “Not for Profit” Entity operating in the Field of Environmental Education.

Kelvin was a founding member of the Gympie & District Field Naturalist Club in 1968. He assisted in the compilation of the original Australian Bird Atlas & later updates, and compiled the original Gympie City Bird List in association with Gympie & District Field Naturalists.



With his wife Amelia, Kelvin formed Cooloola Nature in 1999 from a lifelong interest in Nature and the Environment, and a desire to use their experience gained with the collation of data for various organisations and private landowners in undertaking Environmental Education activities for youth and the general public.

Kelvin and Amelia have assisted with the establishment of the original Tin Can Bay Foreshore Bird Walk and are dedicated to the promotion of Avi-tourism as a sustainable sector of Eco-tourism.

Cooloola Nature also conduct Fauna Surveys for nature research, Department of Natural Resources, Forestry and National Parks Authorities as well as Landcare groups and rural landholders.

They also provide a range of environmental education including through environmental festivals and rural shows, libraries, field days and their own nature talk series on a local radio station!

Session Time: Saturday 17th October 2020, 9.00am – 4.00pm.

Location: Gympie & District Landcare Group Conference Room – 5 Groves Rd, Araluen QLD 4570

Prices: \$80 – Members / \$100 – Non Members

2020 Blockie's Landcaring Course

We have had a huge amount of interest in this course and we would like to advise that we are now fully booked. We hope to provide a similar course next year.



Support our Organisation by Donating Native Seeds

One way that you can support our Organisation is by donating native seeds to our nursery, however it is extremely important when collecting and donating seeds to know both what you are collecting and that you are collecting it legally.

Severe penalties can be imposed for collecting and removing seeds from certain areas, such as National Parks and State Forest areas.

- When collecting any kind of native seed on public land, please ensure that you are aware of any regulations that may be in place, or any permits that may be required.
- When collecting any kind of native seed on private property, please ensure that you have the permission of the landholder for collecting seeds.
- The only seeds that we will accept are those of Australian Native plant species.
- We need to know exactly what the seed is – therefore we require a sample (or very clear photograph) of the branch/stem, the leaf and even the flower if possible. If you are unable to provide this information we will unfortunately be unable to accept your donation.
- We also need to know exactly where the seed was collected from and whether it was from the ground or off the tree.

Another extremely important thing to remember when collecting native seeds is to only remove no more than 20% of the available seed or fruit from the plant.

This assists our ecosystems in two ways:

1. by providing a natural food source for our local wildlife such as birds, bats and possums, and
2. by allowing our native plants to undergo their natural regeneration process, thus assisting with the local survival of the species.

Please remember that if you are unsure about anything regarding seed collection, please speak to our friendly nursery before collecting any seeds. Our nursery can be contacted on (07) 5483 8866

Volunteer Inductions Resuming from July 2020



We are pleased to announce that with the world slowly beginning to return to normal, our operations are also following the same path!

With restrictions eased in Queensland, we are now able to accept new volunteers – we know that there have been a few eager faces ready to come and join our team, and now you finally can!

Our first Volunteer Induction day will be held on Friday 3rd July 2020, beginning at 9:00am. Regular induction days will then be held on the first Friday of each calendar month.

Before volunteering with Gympie & District Landcare Group Inc. it is a requirement that you attend a volunteer induction day. Inductions are held at our Gympie & District Landcare Group Conference Room, located at 5 Groves Rd, Araluen QLD 4570.

Registrations are essential – please contact one of our friendly office staff on (07) 5483 8866 to register.

If you are currently on our waiting list, we will contact you closer to the date to confirm your attendance. Please feel free to confirm your attendance sooner if you wish, by contacting our office.

Bio-Control News - Composting Worm Farm Update

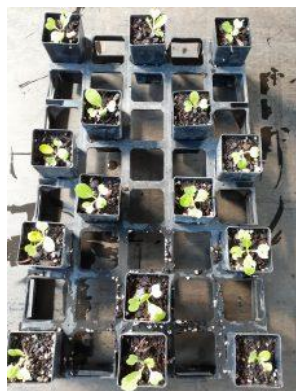
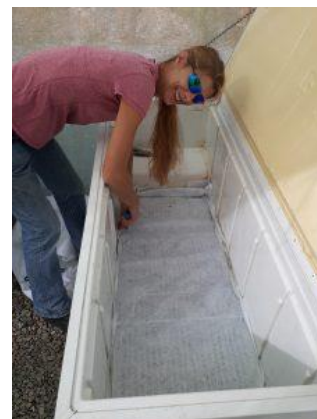


Nina, Nathan and I have been busy setting up worm beds by recycling old fridges and freezers. We would like to say a big thank you to everyone who kindly donated to the composting worm farm set-up.

A mix of Tigers, Blues, Reds, Gardener's Friend and Nightcrawlers have been purchased and they should arrive in approximately two to three weeks, ready for their new homes.

Composting worms are different to earthworms as they like to eat food scraps and other organic material, creating rich worm castings and worm juice which are both fantastic for the home

garden. Earthworms on the other hand, prefer to eat plant debris and soil and will move freely about your garden.



Parsley, lettuce, bok choy and silverbeet have been planted in pots and once our wicking bed is up and running, we will be able to include a wide variety of different veggies and herbs for the worms. Composting worms will also happily eat fruit, cardboard, newspaper, hair clippings and even dust from your vacuum cleaner!

We are hoping that by mid-Spring our composting worms will be available for sale, however we will keep you posted with regular updates.

Regards,

Yvonne Hennell – Bio Control Manager



Library Books Available for Loan to Members

Did you know that we have a comprehensive range of library books that are available for loan?

Members of Gympie & District Landcare Group Inc. have full access to our library, so come in and enjoy a few hours in our library or take a book on loan for 2 weeks.
(maximum of 3 books at any given time).

Please note that our library is located in the Nursery Retail Area. Our full list of available library books and a copy of our Library Lending Policy can be found on our website.

Fundraising for Gympie Landcare – Drakes Key Tags

Did you know that when you shop at Drakes in the old “IGA complex” and show them one of our Gympie & District Landcare Group key tags, 1% of your total bill is donated towards our organisation?



By using your tag every time, you shop, you’re actually fundraising for our organisation!

If you do not have a Drakes key tag currently, please contact our office on (07)5483 8866 or email admin-assistant@gympielandcare.org.au and we will provide one for you to pick up from our office.

Conference Room Now Available for Hire

The Community and Gympie Landcare members are welcome to hire our Conference Room facility. Our meeting room includes air-conditioning, tables, chairs, a projector, screen, whiteboard and kitchen facilities. The venue can seat 30 people configured in cinema style.



Occasional use – *on or before 30th June 2020*

1 Hour (minimum 2 hours) – **\$20.00**

Half day (4 hours) – **\$50.00**

Full day (8 hours) – **\$90.00**

Occasional use – *from 1st July 2020*

1 Hour (minimum 2 hours) – **\$25.00**

Half day (4 hours) – **\$55.00**

Full day (8 hours) – **\$95.00**

Costs for regular use of our venue by clubs or groups will be determined on request.

Please contact our office on (07) 5483 8866 to obtain a copy of our Terms & Conditions, as well as a Booking Form.

Find Us on Facebook!

Here at Gympie & District Landcare Group Incorporated, we recognise that social media is becoming one of the most effective sources of communication and a fantastic way to get our name out there and increase our exposure!

Not only is it a means for communication, but it creates an additional platform to keep our community aware of upcoming events and provides further opportunity to provide the community with helpful tips in relation to land care.

We would love to see our Facebook follower base increase and encourage all of our members to “follow us” on Facebook.

If you have a Facebook account, go to our Facebook page and hit the “like” button to follow our posts.

Don't forget to like and share our posts on our page to assist us in gaining further exposure in our local area!



Important Update – Our Containers for Change Drop-Off Depot is Now Open



It's official! Our Express Drop-Off Point for the Containers for Change scheme is now officially re-open.

Did you know that by returning your containers at the Gympie Landcare Nursery, our organisation receives a 1.5 cent donation for EVERY container that you return – and this doesn't even come off your refund!

We use these funds to support our Junior Landcare Program, aimed at inspiring and educating young people in the Gympie region to practice sustainable regenerative land management practices and environmental sustainability.

How Does It Work?

Bring in your recycled containers and pop them into the designated purple bins. All funds from the containers in the bins are donated to Gympie Landcare.

If you would like to claim your own change for the containers, you must use and fill your own multi-use plastic bag, before printing and sticking your label on the front and placing in the cage-bin provided.

Please note: We do not give cash for container exchanges as we are an 'Express Depot'. Return-It Queensland will deposit all funds directly to the bank account that you have nominated upon creating your Containers for Change account. For all enquiries relating directly to containers or refund amounts, please contact Return-It directly on (07) 3390 1377.

Labels are sourced from the 'Return It' kiosk – we have instructions available if you need any help.

If you would like to donate the funds from your entire bag of containers to Gympie Landcare, all you need to do is provide our code for the sticker: C10161523

Did you know that when you donate your container funds to our organisation, we receive a total of 11.5 cents per eligible container!

For more information on the Containers for Change scheme, please visit www.containersforchange.com.au

OPENING HOURS:

Wednesday – Friday: 8.30am – 3.30pm / Saturdays 9:00am to 1:00pm / Closed Public Holidays

Saturdays: 9.00am – 1.00pm

PUBLIC HOLIDAY HOURS:

Our Containers for Change drop off point is closed on all standard Queensland public holidays.